

IN & AROUND THE TERRACES

Information and news for Residents

Spring 2016



Welcome to the Spring! We've been exploring the local area to update you on what's happening in and around the Terraces - in this issue we talk to Manna House Bakery, visit Dynamic Earth and update you on the latest planning news.

MANNA FROM HEAVEN ON EASTER ROAD

Every night while you are sleeping, Manna House Bakery and Patisserie owner Drew Massey and his team are busy creating wonderful bread, pastries and cakes. They bake and sell 1,000 croissants every day! We caught up with Matthew Hall, Operations Manager who enthusiastically gave us a quick tour of what has become an Easter Road gourmet staple for the last 10 years.

What is Manna House's best selling loaf?

We bake our Bloomer, Wholemeal Harvester, Donker and Pain de Campagne daily and then have 24 speciality breads that we bake on rotation. The one loaf that flies off the shelf first is our classic brown Wholemeal Harvester.

Tell us about one of your speciality breads?

A recent addition is our charcoal and rye walnut bread. It's black in colour just like a large lump of coal, but its appearance is deceiving! It's soft in texture with a distinct nutty flavour and was developed for a catering company who needed a black loaf for their event.

Where are your ingredients sourced?

We use the best ingredients we can find for the job. Some of the flour for our breads is sourced locally

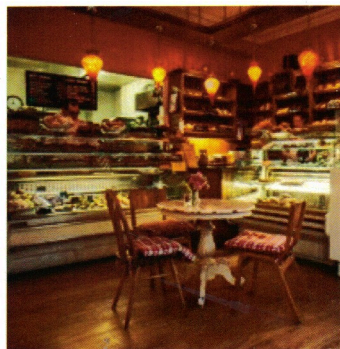
from Chancelot Mill and other flours come from Europe for our patisserie. In our café we source coffee from the 'Better Beverage Company', which blends and roasts coffee on Morrison Street and we use teabags from Eteaket on Frederick Street.

Who are your customers?

We appeal to all ages; our youngest customers are just five years old, they come into the bakery with their parents for a bread stick! We also supply many local businesses. On Royal Terrace we supply 21212 with special occasion cakes and the newly opened 24 RT Hotel with breads. At the end of each day the bread we don't sell is given to the local charity 'Streetwork' which helps people who are homeless or in need.

Your editor's favourite loaf is the Innis and Gunn beer bread, which tastes wonderful spread with melted cheese, and the lemon and almond cake is an afternoon tea treat, it's gluten free and has a perfect citrus flavour.

The Manna House Bakery and Patisserie is deservedly busy. It strives to bring new and innovative baking to the area, as well as providing local customers with their daily bread.



The Manna House
Bakery and Patisserie
22 - 24 Easter Road,
Edinburgh, EH7 5RG



SUPER-FAST BROADBAND... FINALLY!

Super-fast fibre optic broadband is indeed now available to residents on the Terraces.

Get in touch with your provider to upgrade to the new system, but needless to say...there is a cost. However, it really is great news that in our 19th Century buildings we can now lead 21st Century lives, at speed.

PLANNING AND TRAFFIC REPORT

St James Centre - goodbye!

After all the talking and the waiting it really is time to say goodbye to our own local shopping centre. If you have visited lately you will know that it is already a ghost town with only a very few retail units remaining. Weirdly, it all seems rather sad, and we will miss Rymans for sure.

The work to incubate John Lewis as a stand-alone unit is almost complete and demolition on the site is due to start within weeks. The 1st Phase of scheduled demolition is to take down New St Andrew's House, and the total timescale for the whole site is 12 -18 months.

There has still to be confirmation of the route for debris removal to Leith Docks, but our local councillor, Joanna Mowat, was hoping that the load could be spread between Leith Walk, Broughton Street and perhaps Easter Road to ease traffic tensions. It is anticipated that around 100 lorries a day could be making the journey!

So shed that tear, wave that hanky and be patient till the new St James' Quarter emerges in 2020.

Planning

It really is 'last chance saloon' time with regard to decision making for the Old Royal High School. We would very much appreciate it if you could email or write to our relevant MSPs in support of the Music School proposal. Please email rrcta@live.co.uk for a full address list.

Traffic

The Council is still playing its cards close to its chest with regard to any plans for future traffic movement on Picardy Place, introduction of Trams etc. There is a Leith Stakeholders meeting in June where, supposedly, all will be revealed. Believe that if you like, but watch this space.

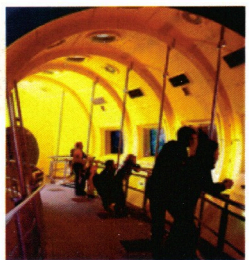
TIME TRAVEL ANYONE?



Who'd have thought there was the opportunity to travel 15,000 million years back in time, right here on our doorstep? Dynamic Earth, located at the bottom of Holyrood Road, rockets visitors back through space and time on a journey to observe the dawn of Earth's creation.

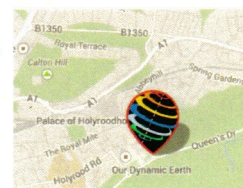
As a first time visitor, your editor found it a full-on sensory experience - it's more theme park than museum. Helpful staff guide you through a series of different evolutionary experiences where you'll encounter volcanic heat, arctic chills and even a monsoon downpour in the rainforest.

A handy map is provided and charts your journey's progress so you can pace your visit. Some sections have more interactive attractions than others, and some are a bit of fun - like the 'Why dinosaurs became extinct' game in the Casualties and Survivors section.



The ShowDome concludes a visit with a high-definition 360 degree movie experience. The film I saw took me to the furthest reaches of the Universe to witness extreme planetary weather systems. Not my usual choice of film subject but it made me think twice complaining about our weather - you should see the hurricane winds they have on Saturn!

If you fancy discovering more about our planet, check it out this Spring. **Book online for cheaper tickets and for less than the cost of two visits upgrade to an Annual Explorer Pass.** With the ShowDome's changing calendar of films it's an attraction worth re-visiting.



www.dynamicearth.co.uk

WHAT DO WE DO?

The RRCTMA was founded back in 1967, when a group of community-spirited residents decided to get together over a drink, or two, to focus on local issues.

Over the years the Association has driven the local agenda and has achieved many wins that have enhanced our environment such as gull proof bags.

Recently the Association has encompassed the Mews and has been part of some interesting and challenging initiatives, like the Royal High School development. The three objectives of the RRCTMA are to:

- Preserve and improve the general amenity of the Terraces
- Encourage awareness and a responsible attitude
- Co-operate with local bodies, and act as representatives for the neighbourhood

The RRCTMA reviews all planning applications to ensure that the architectural and aesthetic integrity of the Terraces is maintained. We look at both residential and City developments, rubbish collections and street lighting.

A RRCTMA member attends Community Council meetings attended by city councillors, to keep us fully up to date on local matters, as well as reporting our concerns to them.

On the social side we organise a range of events - in the past 12 months we have held a drinks event at the Collective Gallery on Calton Hill, carol singing in Regent Gardens and joined with the Gardens committee for summer garden events. You'll find these advertised in our newsletter which we distribute throughout the year.

Are you interested and want to get involved? Please get in contact with us at rrcta@live.co.uk. You can also support the work we do by becoming a member for £10 a year or £20 for a household.